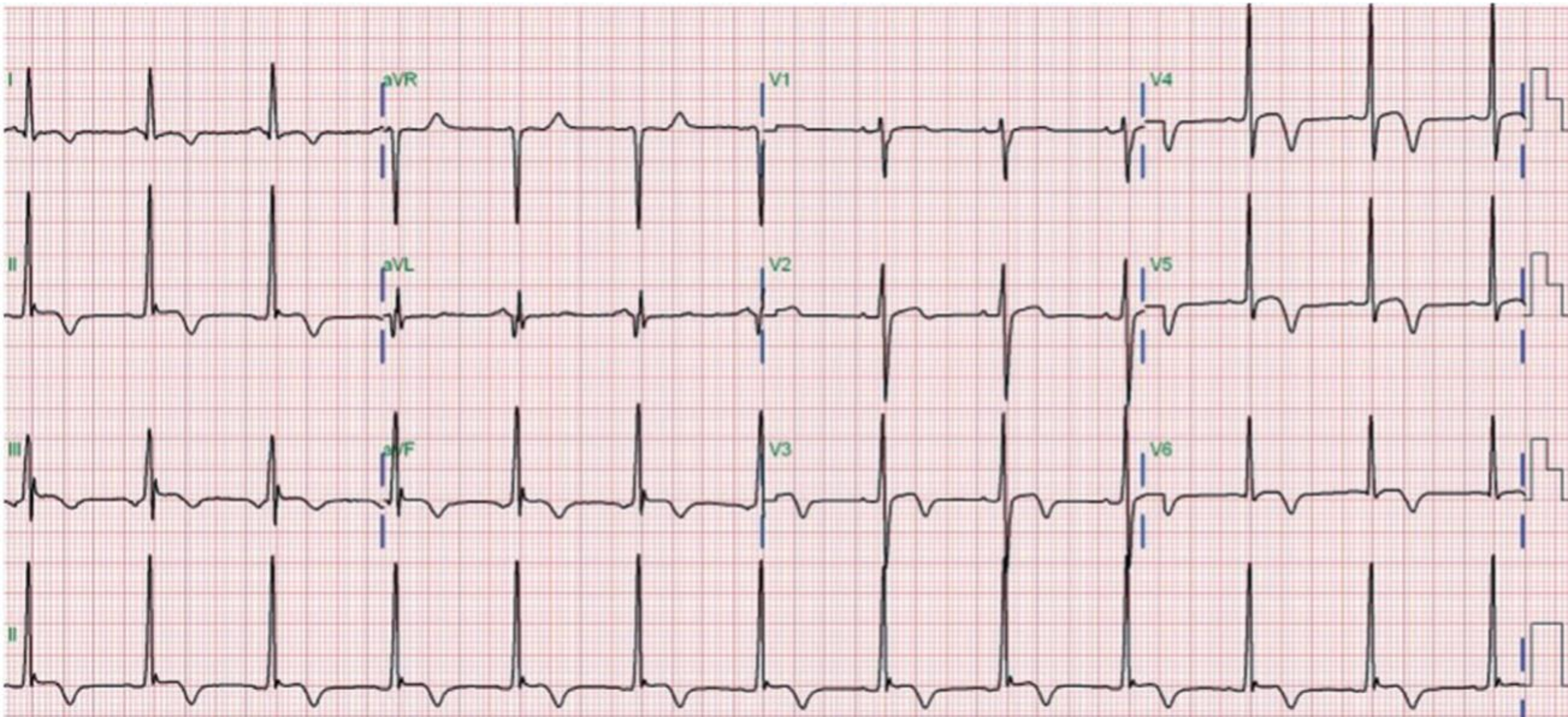


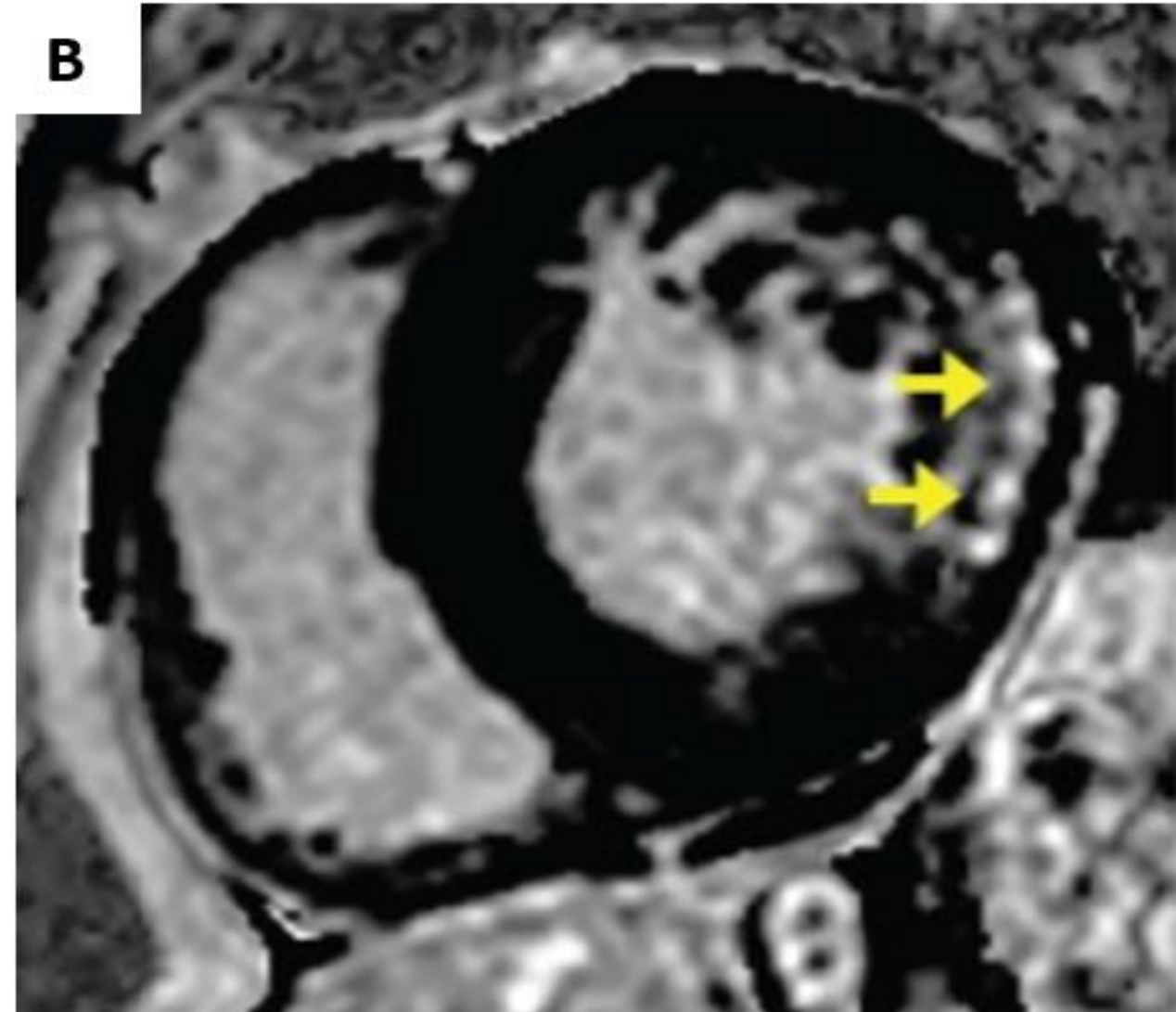
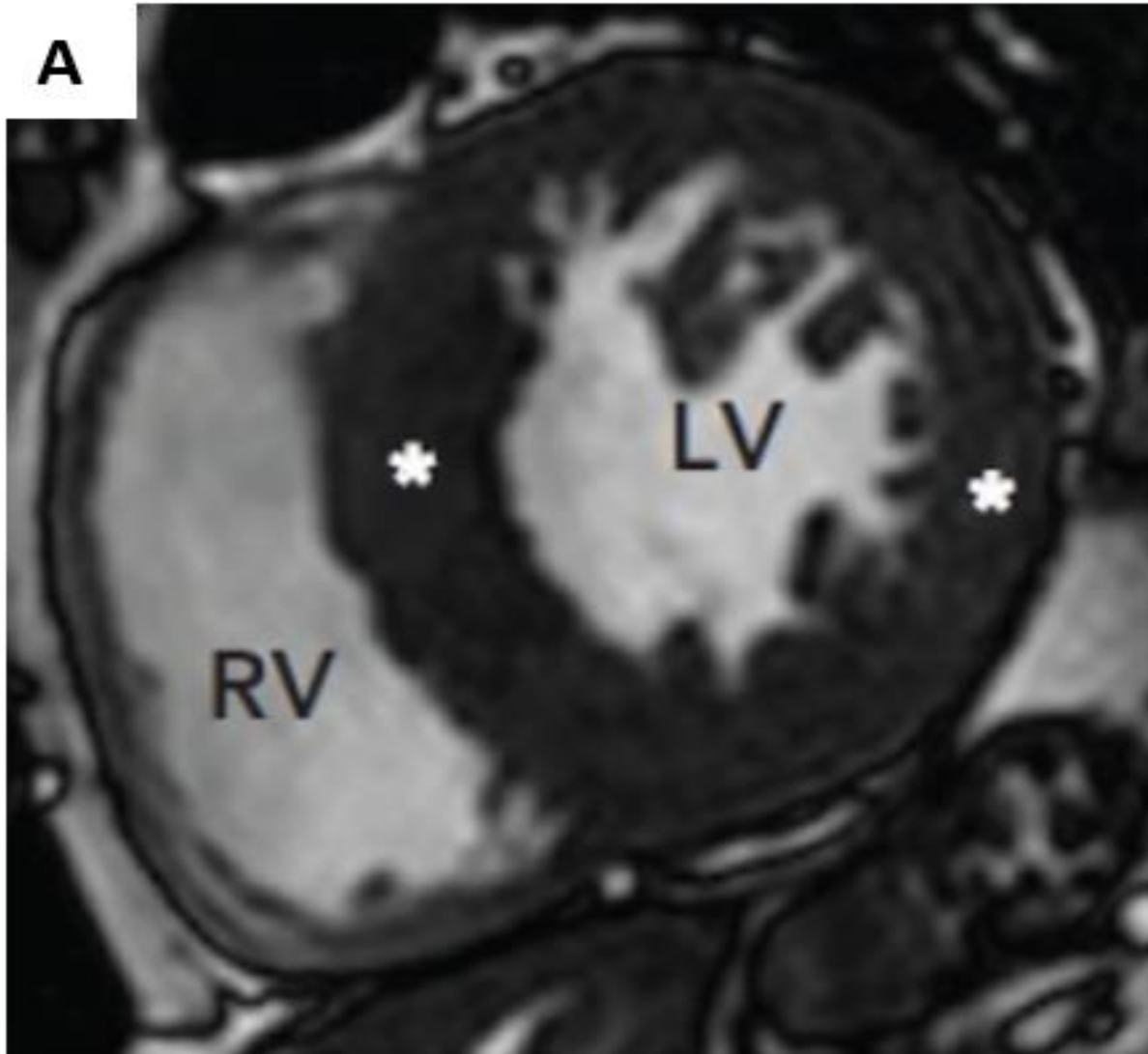
Example of ECG in Fabry's disease (**Germain DP. Fabry disease. Orphanet J Rare Dis. 2010;5:30.**)



ECG showing LVH with strain pattern Deep narrow q wave in aVL.



### Example of typical CMR in Fabry's disease



**Fabry's disease confirmed by genetic testing (pathogenic mutation in the galactosidase  $\alpha$  gene).**

A: Pre-contrast short-axis CMR image in a 44-year-old woman with increased LV wall thickness in both IVS and lateral wall (maximum wall thickness of 16 mm in septum and 13 mm in the lateral wall).

B: Post-contrast images in the same patient demonstrate LGE confined to the basal inferolateral wall leading to concern for Fabry's disease.