

PROPOSAL OF CLASSIFICATION OF TYPE I BRUGADA ECG PATTERN

Prof. Dr. ANDRÉS RICARDO PÉREZ RIERA

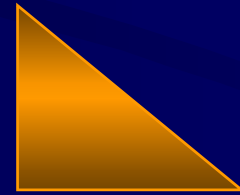
Associate Professor, ABC University – Santo André – SP – Brazil.

In charge of the Electrovectorcardiography Area.

PROPOSAL OF CLASSIFICATION OF TYPE I BRUGADA ECG PATTERN

**TYPE IA: COVED SHAPE OR “BULL TERRIER”
WAVE**

TYPE IB: TRIANGULAR SHAPE



TYPE IC: “LAMBDA” (λ) OR GUSSAK WAVE

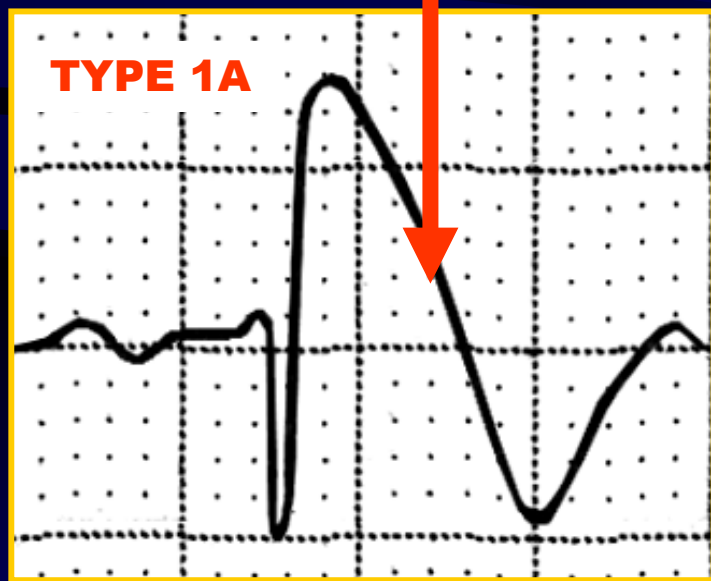


GREEK SMALL LETTER LAMBDA

PROPOSAL OF CLASSIFICATION OF TYPE I BRUGADA ECG PATTERN

TYPE IA

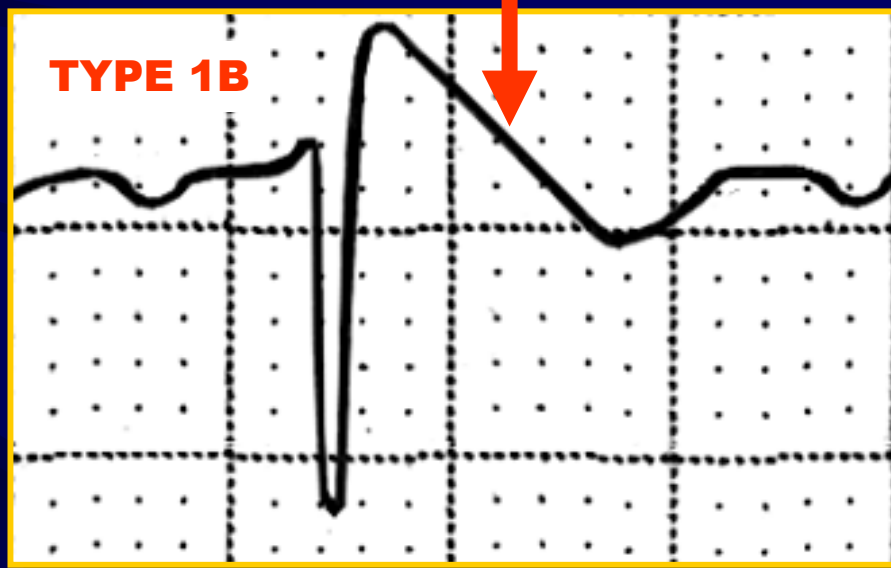
**COVERED TYPE
(CONVEX TO THE TOP)**



V₁ to V₂ or V₃

TYPE IB

TRIANGULAR SHAPE

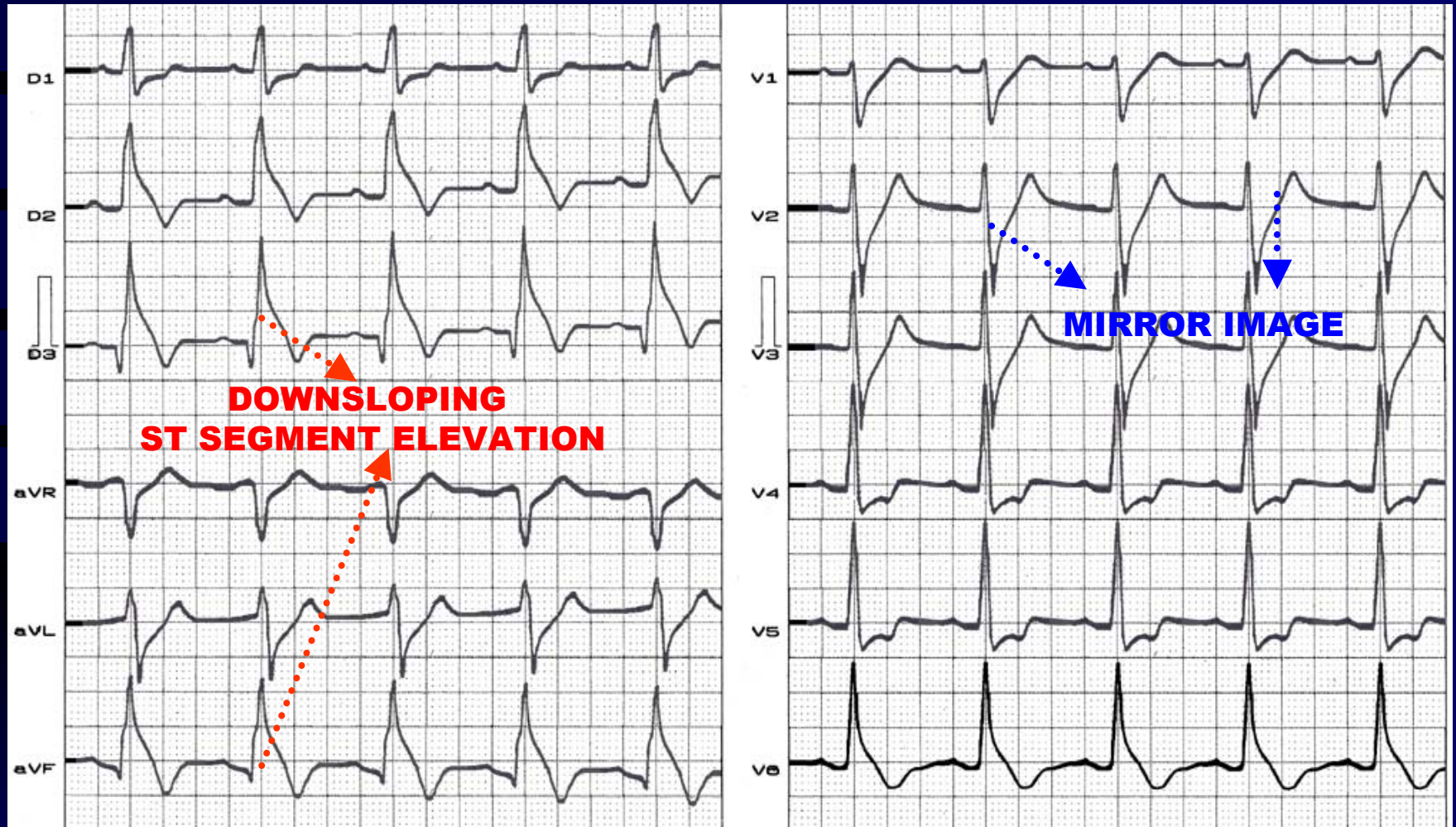


V₁ to V₂ or V₃

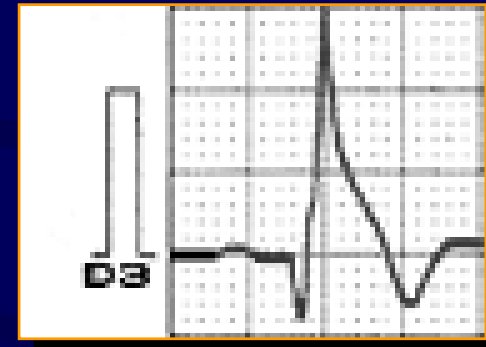
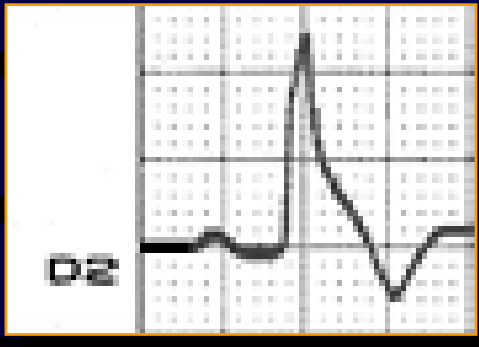
“BULL TERRIER” OR TYPE IA BRUGADA PATTERN



PROPOSAL OF CLASSIFICATION OF TYPE IC BRUGADA ECG PATTERN



TYPE IC WAS DENOMINATED “LAMBDA” WAVE BY GUSSAK I ET AL



λ

Type IC: ST-segment elevation is triangular or coved to the top (“coved type”) = or $> 2\text{mm}$ (0.2mV), and followed by negative T wave located in **inferior leads**.

Gussak I, et al. J Electrocardiol 2004;37:105-107.