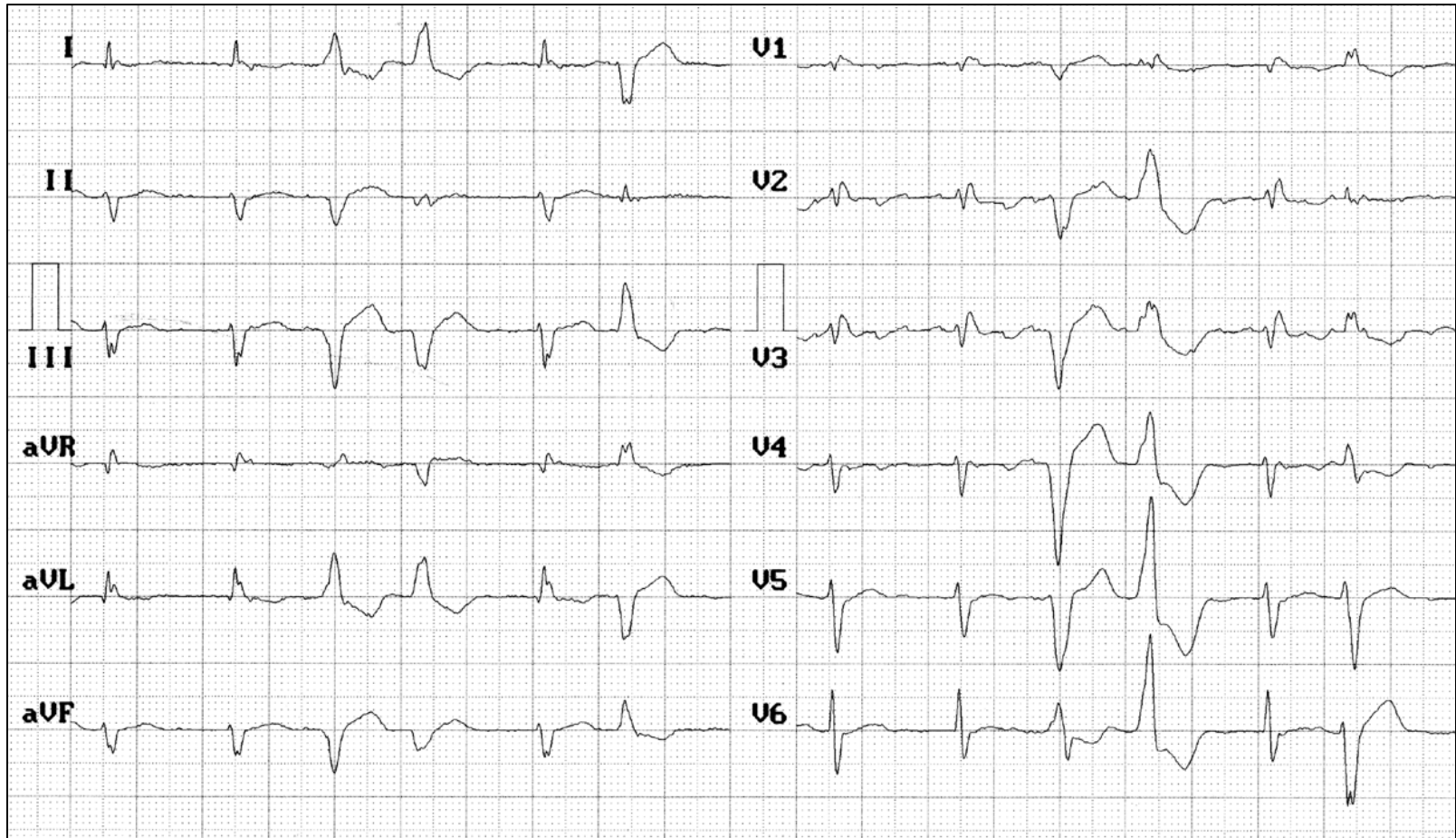


TYPICAL ECG OF CHAGAS DISEASE



P wave is not easy to see because severe fibrosis in wall of atriums.

LAFB: extreme left axis deviation, -75° , qR pattern in DI and aVL lead and rS pattern in inferior leads. Wide S wave from V_5 to V_6

CRBBB: triphasic complex rsr' from V_1 to V_3 , r wide wave of aVR and broad S wave from V_5 to V_6

PVCs.

CRBBB+LAFB+POLIMORPHIC PVCs are characteristics of this disease.

Sensi. 8
 Timer 2 msec
 Loop All Loop
 Sagittal Right
 Z Axis Back
 Filter Hum
 Muscle
 Drift

ECG/VCG CORRELATION

