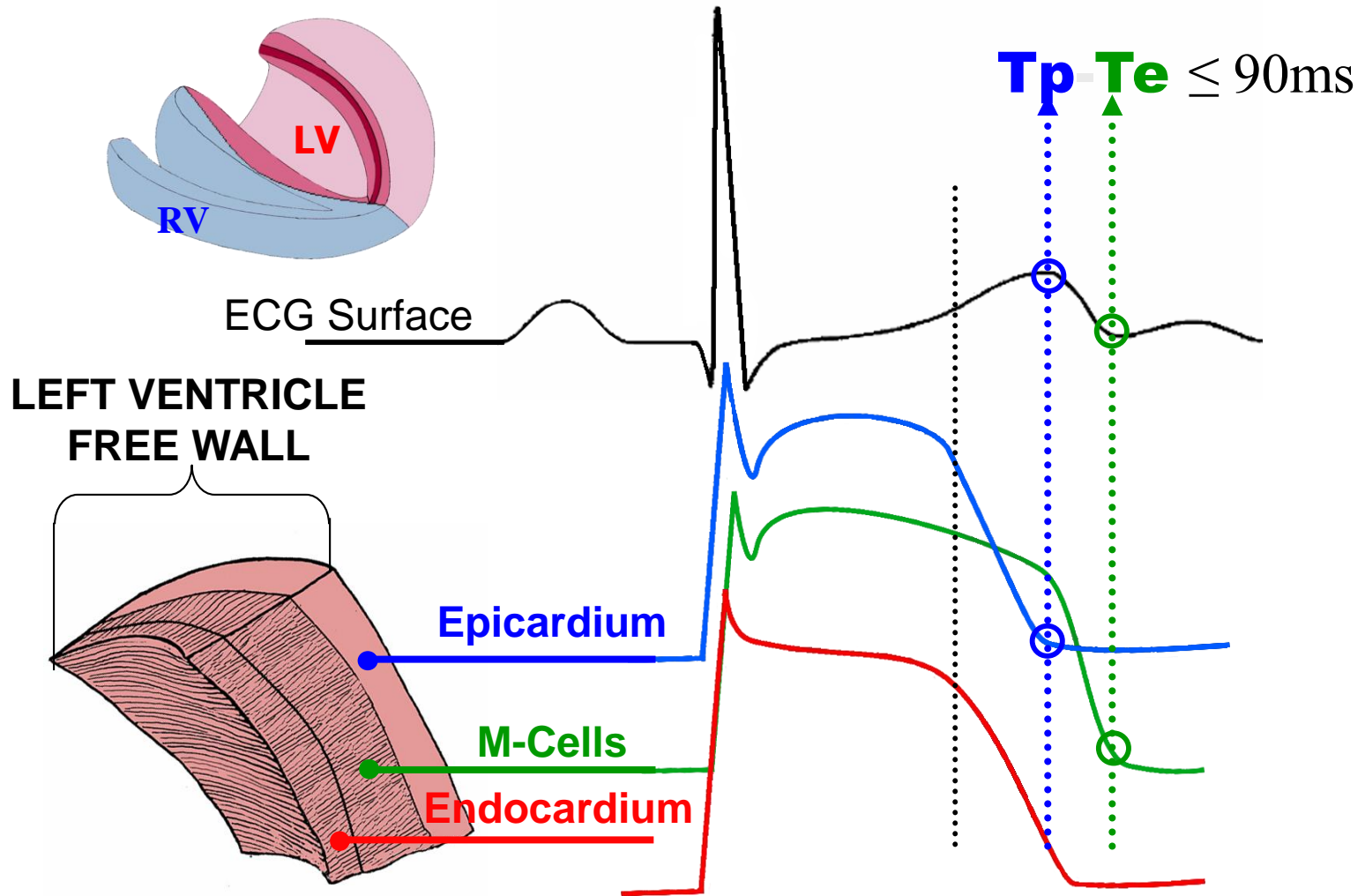


T-peak to T-end interval (TpTe) Transmural dispersion of repolarization scheme



Distance between the T-peak/T-end Normal value $\leq 90ms$ It is prolonged from 90 to 130ms in the global transmural dispersion cases. In this circumstance is observed:

- *QT interval prolongation from 350 to 450 milliseconds*
- *T-peak to T-end interval (TpTe) prolongation*
- *T-wave notches appeared in very limited precordial leads.*